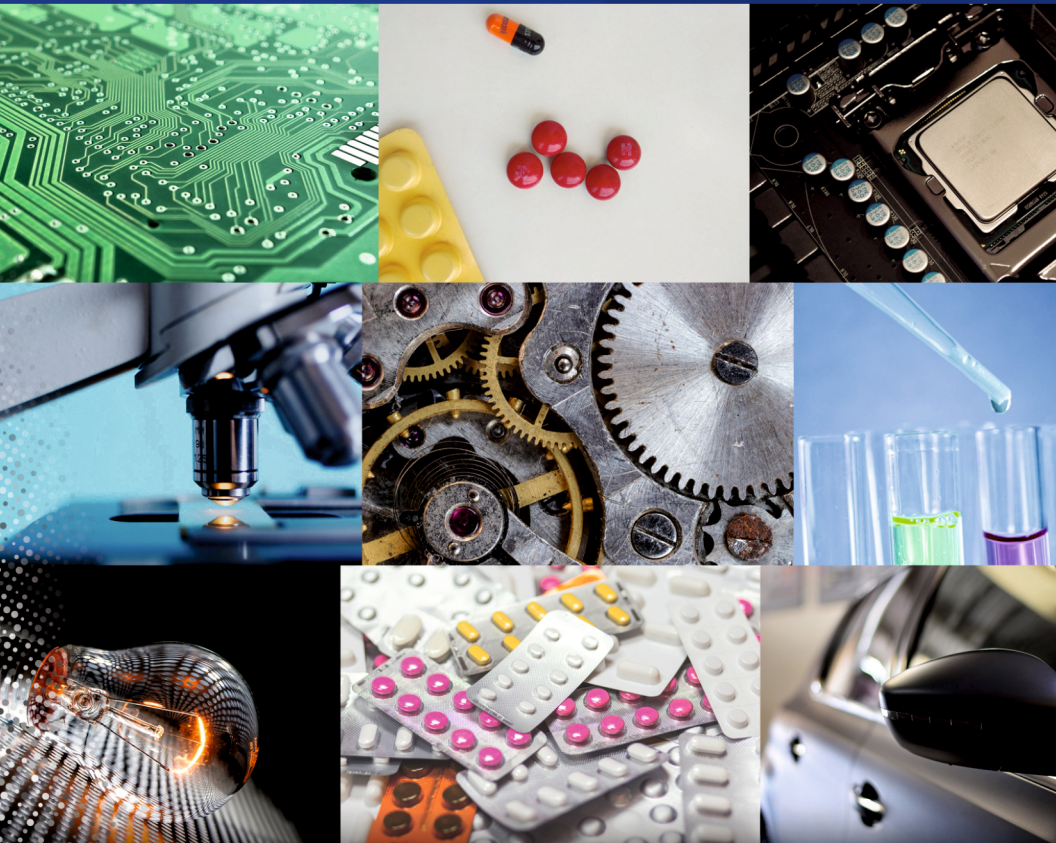


Patents

How to register?



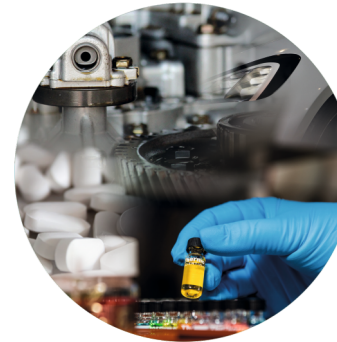
Concept of Patents



It is the document granted by the State, which provides its owner with exclusive rights to exploit the invention for a determined period of time (10 or 20 years), preventing thirds from manufacturing, selling, commercial use and/or importing the protected invention.

Which are the modalities of protection?

Invention Patent:



In general it is known as Patentable Invention any new and inventive product or procedure that provides a technical solution to a problem, modifications introduced in known things that also provide a new technical solution are subject to Patent as well.

Industrial Model Patent:

It is understood as any plastic shape combined or not with colors, and any industrial, commercial or domestic object or utensil that may serve as a model for the production or manufacture of others and that is different from its similar ones due to its distinct shape or configuration.

Industrial Design Patent:

It is understood as any arrangement or union and colored lines intended to give any industrial object a special appearance.

Step by step how to register a patent.



Register as an user in "Online with SAPI"

2 Enter the option of "Patent",
"Service calculator",
verify the amount of the
"Patent Formulary FP-01" request.

3 Make the payment
corresponding to the request
(send transfers from the
same bank).

4 Select the Template FP01-COMBO preload, complete the items and
print them.

5 Deliver the next requirements in our main office: a cd (including patent
draft, descriptive memory), prints of the triplication requirements and
combo payment; or send them through a mail address:
patentesrepcionvirtual@gmail.com

• **Natural persons** identification card copy and RIF.

• **Legal persons** must deliver the constitutive act of the enterprise, RIF of the
enterprise, certificated copy of foreign priority (Whichever the case may be),
inventors declaration documentation and transfer, the authenticated power of
attorney and identification card of the owner.

■ **Descriptive memory** Two (02) supports, one (01) physical and (01) one in CD or
DVD in a PDF format.

6 If all requirements are accomplished, we will assign you a request
number through mail address.



Important

• The payments require 24 hours to be validated in the system.

• The digital archives formats must be; JPG or PDF images; and PDF documents.



For more information, follow us in our social media or visit the web page of the institution (www.sapi.gob.ve)




SAPI Services affiliated accounts.

Public Banking

Banco de Venezuela	0102-0552-210000025713
Banco del Tesoro	0163-0204-08-2043000-385

channels of assistance

 @sapi_venezuela  @sapi_ve  @SapiVenezuela  Sapi Venezuela

 SAPI Oficial  sapi_ve  Sapi Venezuela

scan this code

